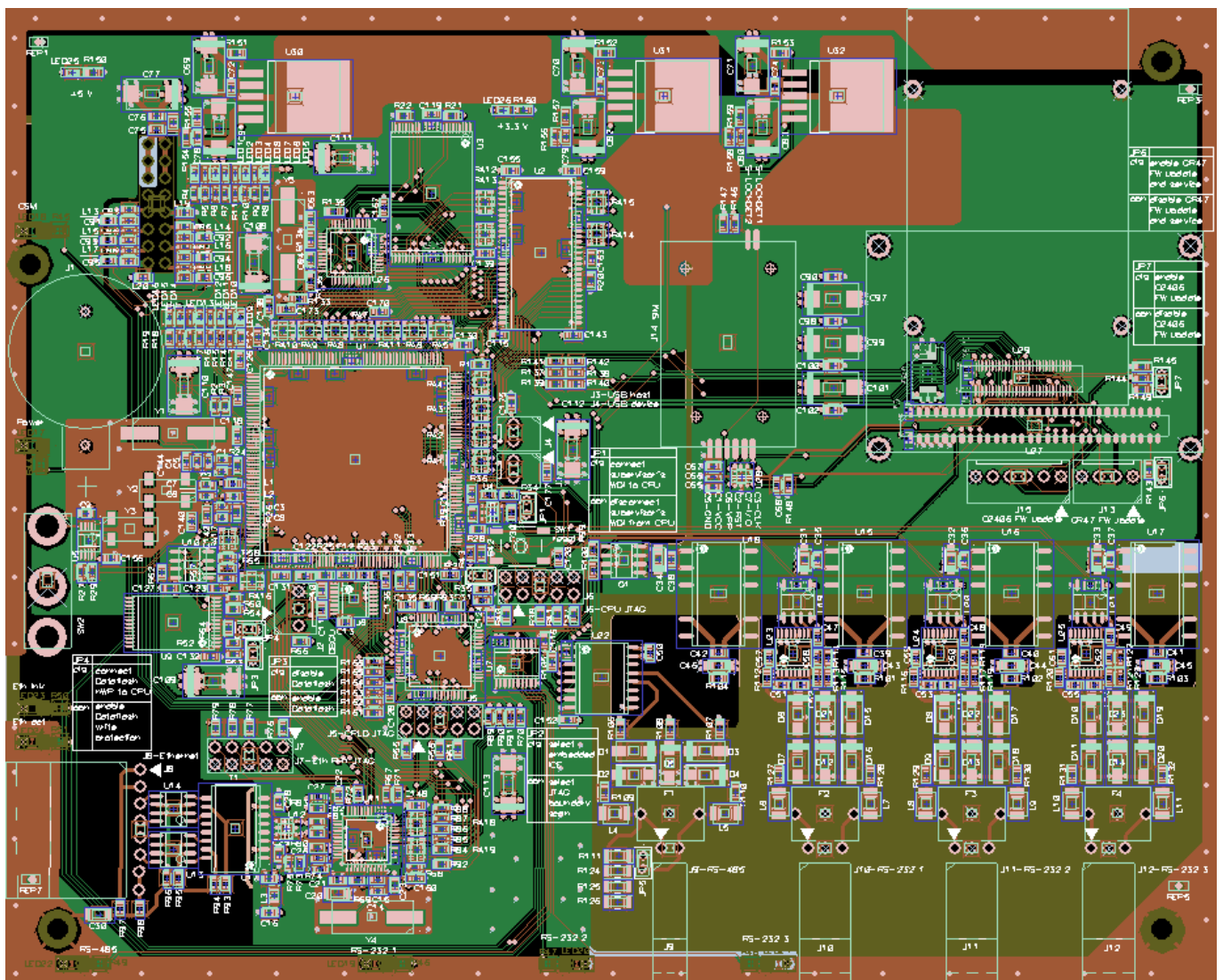
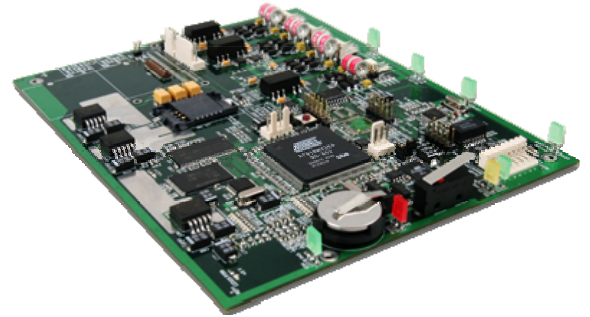


The multilayer printed circuit board is designed for the control and information acquisition system. The device is based on SoC AT91RM9200 in PQFP 208 package. Original design solutions and PCB trace routing methods have been implemented for the following purposes: micro and nano-impacts antijamming of sensitive chip elements, adequacy to the government standards on intrinsic emission, radiation resistance and electrical safety.





Specifications

Board type	Digital
Layers	4
Dimensions, mm	145x180
Connections	2391
Differential pairs	USB, Ethernet
Components	890
Peculiarities	<ul style="list-style-type: none">• ARM-Processor Atmel AT91RM9200 (PQFP 208)• System frequency 100 MHz• CPLD Xilinx XC95xx• Ethernet 10/100• GSM\GPRS modem• NAND-flash• RS-232 and RS-485 optocoupled interfaces• Adequacy to the government standards on intrinsic emission, radiation resistance, electrical safety (Class 2)• Electrostatic protection of communication channels and power-supply circuits• Resistance to brownouts
Design facilities	PCAD 2002
Lead time	2 weeks