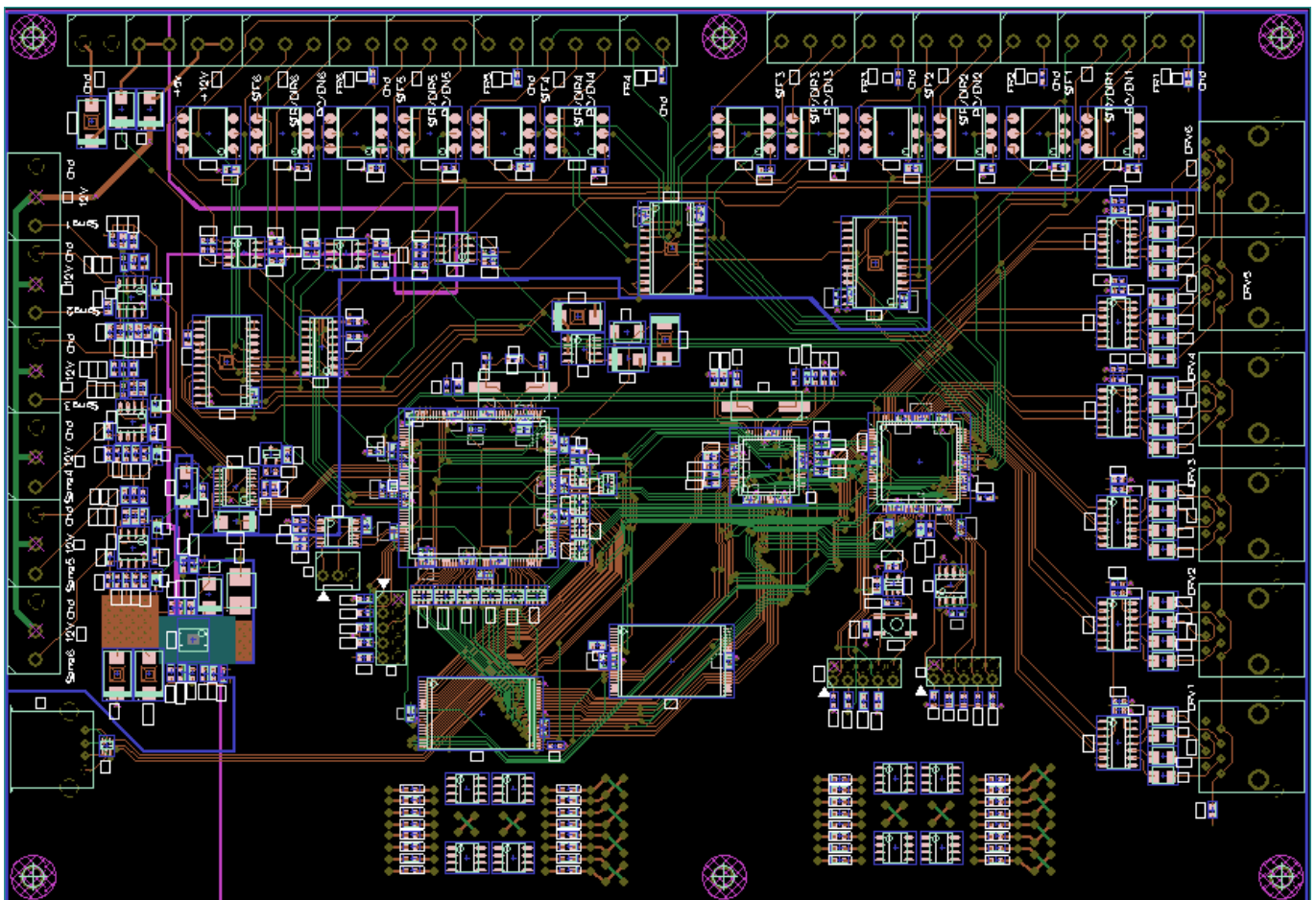
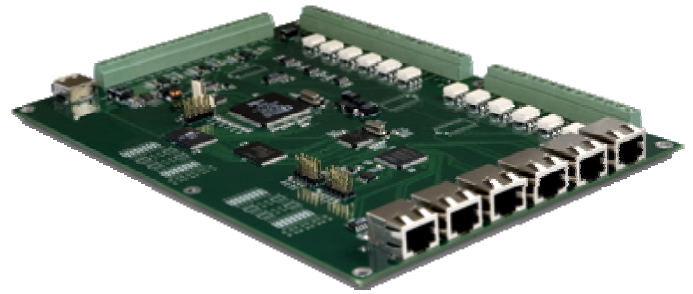


The controller board based on ADSP BlackFin BF532 (LQFP176 package) have been developed for the simulator platform used in entertainment industry. For the purpose of influence minimization over circuit digital elements, additional protection design solutions have been used in connection with stringent electromagnetic compatibility (EMC) requirements determined by close position of platform strength elements. Special PCB trace routing methods have been implemented in external communication interfaces towards elimination interference effect from operating frequency converters and high-performance alternating current motors.





Specifications

Board type	Analog-to digital
Layers	4
Dimensions, mm	155x225
Connections	1750
Differential pairs	USB
Components	539
Peculiarities	<ul style="list-style-type: none">• ADSP-BF532 (LQFP 176) Blackfin processor• CPLD MAXII• USB host (high-bit-rate)• RS-485 interfaces (6 channels)
Design facilities	PCAD 2002
Lead time	2 weeks