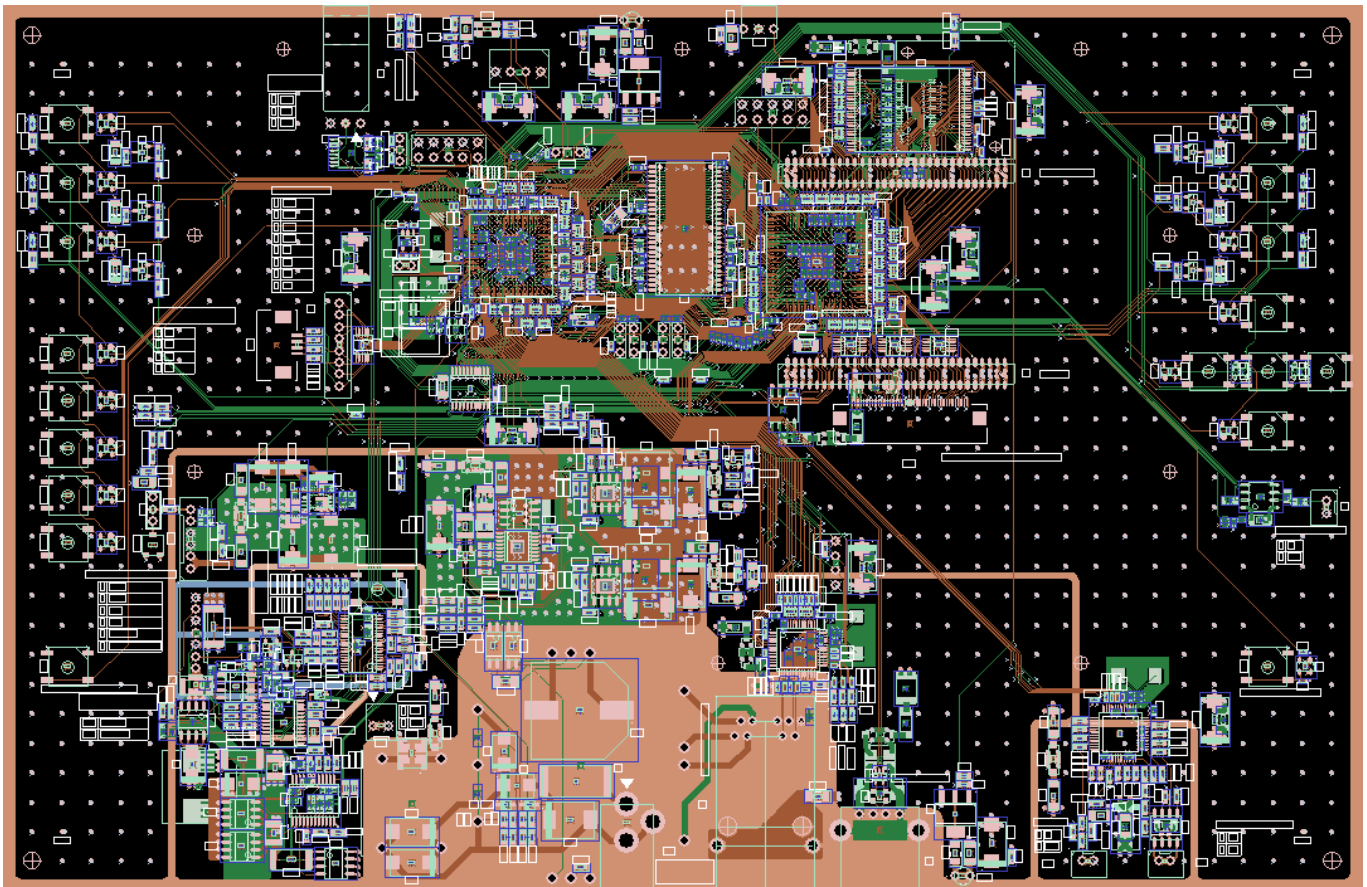
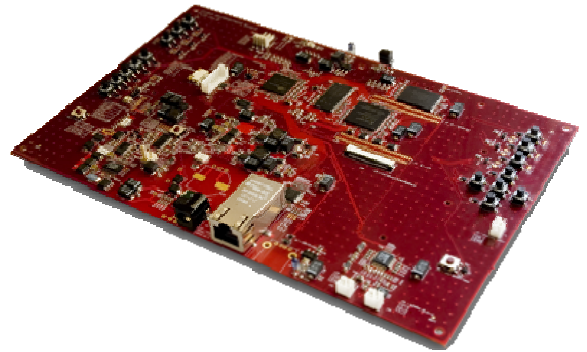


Multimedia «Intelligent Home» controller board

Completed project - March 2007

The multimedia controller board has been designed on the base of SoC Cirrus Logic EP9307 and CPLD XC2C384 in TBGA272 and FTG256 packages. Peculiarities of power circuit wiring and Li-Ion battery charging have been considered during PCB design. Analog circuits' power supply is implemented on separate filtered ranges.





Specifications

Board type	Analog-to digital
Layers	6
BGA packages	2 (TBGA272, FTG256)
Dimensions, mm	150x230
Connections	4225
Differential pairs	Ethernet, USB
Components	1619
Peculiarities	<ul style="list-style-type: none">• Cirrus Logic EP9307 processor• System frequency 133 MHz• Ethernet 10/100• POE• USB host (high-bit-rate)• Wi-Fi, LCD-interface• Li-Ion battery charger• AC'97
Design facilities	PCAD 2002
Lead time	1 month