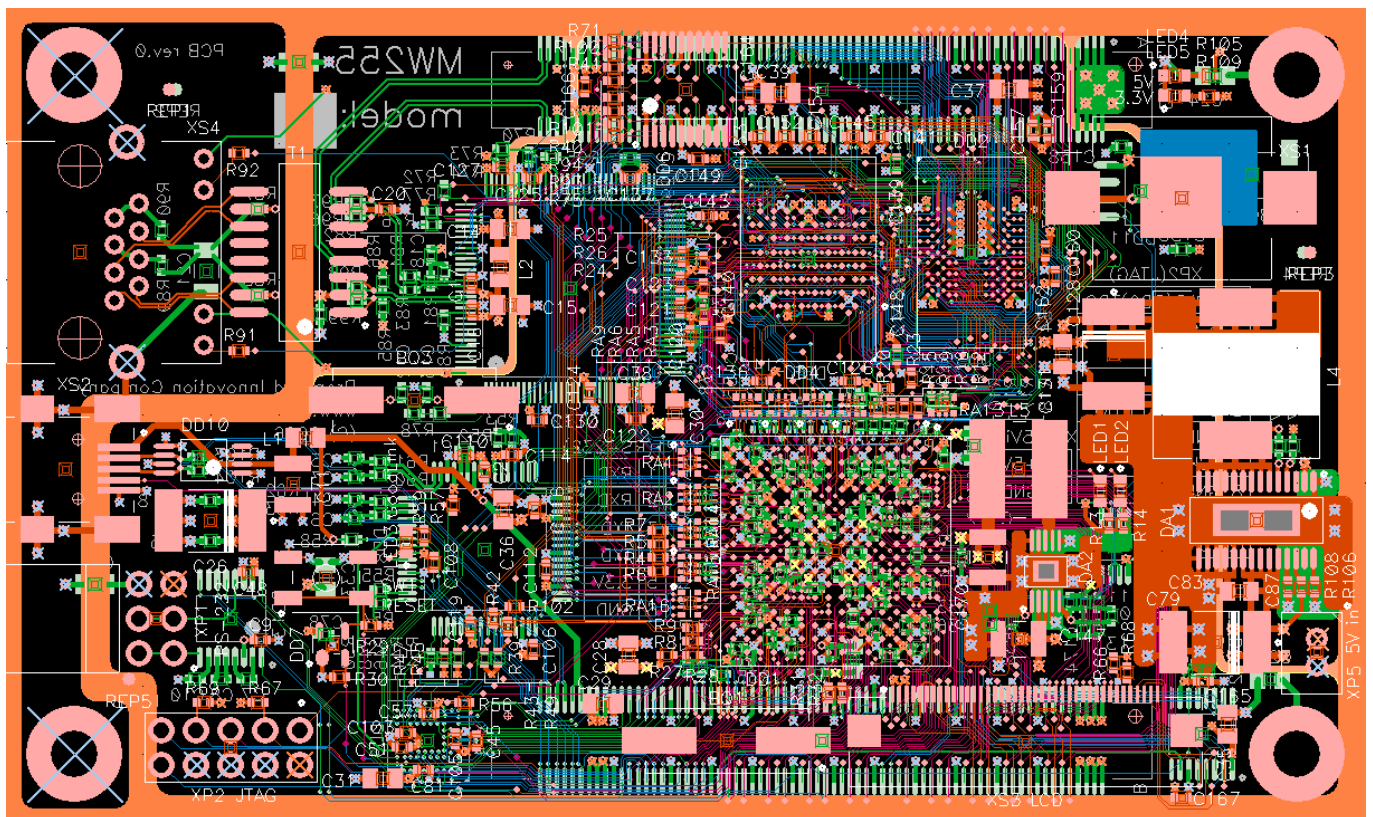


On the basis of PXA255 microprocessor in MBGA256 package Promwad team has developed the electric circuit and also implemented the OEM-module PCB layout. The following interfaces are applied on the board: Ethernet, Full-speed USB OTG, RS-232, TFT LCD with Touch Screen controller, system expansion bus, self-powered real-time clock. The form-factor has been elaborated for various add-in modules connections. The board has small overall dimensions (100x60 mm).





Specifications

Board type	Digital
Layers	8
BGA packages	3 (MBGA256, EBGA64)
Dimensions, mm	100x60
Connections	2209
Differential pairs	USB, Ethernet
Components	585
Peculiarities	<ul style="list-style-type: none">• Intel PXA255 processor• Ethernet 10/100• USB host (high-bit-rate) and OTG• LCD-interface• Touch-screen interface• Extended plug-in
Design facilities	PCAD 2002
Lead time	1,5 months