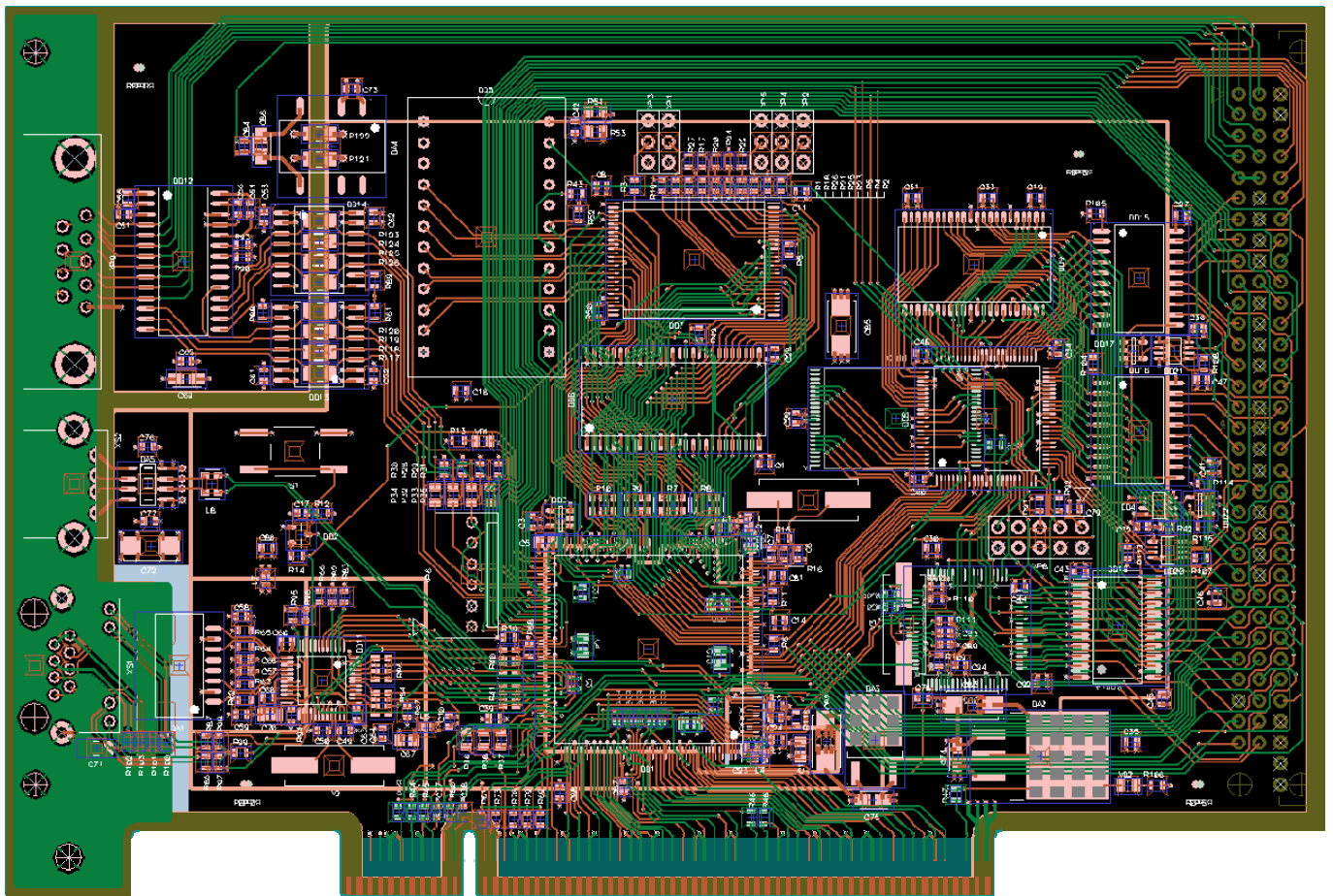
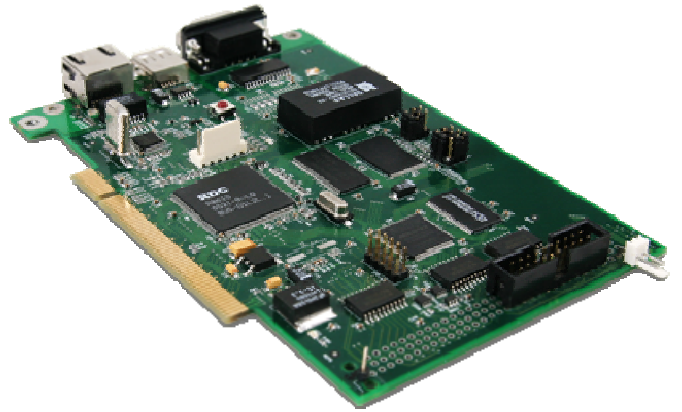


## LED information display controller board

Completed project - December 2005

On the basis of SoC RDC R8610 in PQFP216 package Promwad team has designed a multilayer printed circuit board for the LED information display controller. Almost all available interfaces and buses have been applied: Ethernet, USB, LPC, PCI, X BUS, GPIO.





## Specifications

Board type	Digital
Layers	4
Dimensions, mm	160x108
Connections	1690
Differential pairs	USB, Ethernet
Components	282
Peculiarities	<ul style="list-style-type: none"><li>• RDC R8610 (x86) processor</li><li>• System frequency 133 MHz</li><li>• Ethernet 10/100</li><li>• USB 2.0 host</li><li>• LPC bus</li><li>• PCI bus</li><li>• X-BUS</li><li>• UART</li><li>• RTC</li><li>• CPLD MAXII</li></ul>
Design facilities	PCAD 2002
Lead time	2 weeks