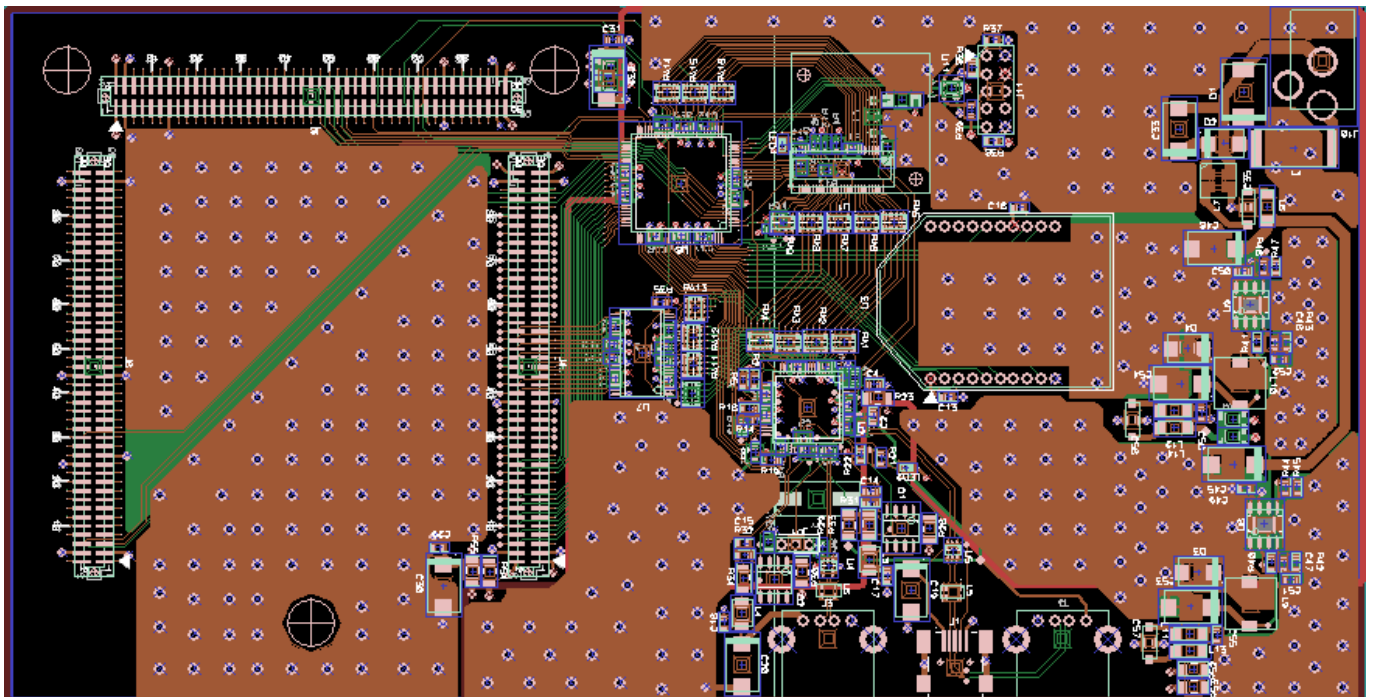
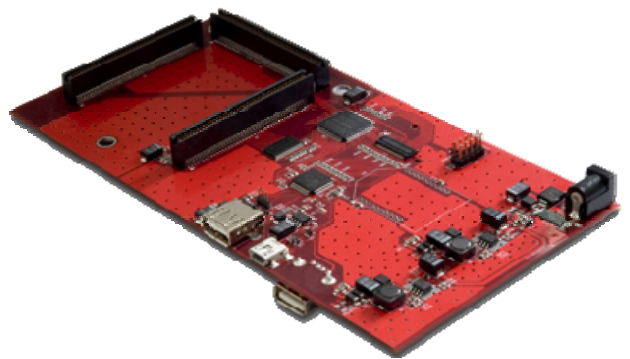


The extender card for 802.11g (WiFi) wireless connectivity has been designed for Analog Devices ADSP-BF533 EZ-KIT Lite debugging board. Its design allows combining EZ-KIT Lite and USB-LAN Extender boards simultaneously without any disorders.





Specifications

Board type	Digital
Layers	4
Dimensions, mm	195x100
Connections	1426
Differential pairs	USB
Components	295
Peculiarities	<ul style="list-style-type: none">• WiFi• ZigBee• USB Host, Slave, OTG
Design facilities	PCAD 2002
Lead time	2 weeks